

PARKWOOD GREEN PRIMARY SCHOOL

NEWSLETTER

A: 178 Community Hub, Hillside P: (03) 9449 3600 E: parkwood.green.ps@education.vic.gov.au

6

ISSUE

03rd MAY
2023
DATE

DATES TO REMEMBER

- **1st May—12th May 2023**
Grade 3 Swimming
- **5th May 2023**
Assembly, District Cross Country
- **8th May 2023**
Grade 4 MCG Excursion, F-2 Athletics Day
- **9th May 2023**
Grade 6 Health Education, Mothers Day Stall forms due
- **11th May 2023**
Mothers Day Stall
- **12th May 2023**
Book Club Issue 3 due, Grade 6 Interschool Sport
- **15th May - 26th May 2023**
Year 5 Swimming

INSIDE..

- Principals Update
- Assistant Principals Update
- National Simultaneous
Storytime
- Social & Emotional Learning
- Prep CSEF Uniform Package
- Australia's Biggest Morning
Tea



PRINCIPAL'S UPDATE

Dear parents & friends of Parkwood Green.

Welcome back everyone. Everyone looks refreshed and ready to start a new term. This term is a short one with only 7 weeks to go, whilst short its still promises to be another busy term with Education Week, Professional Practice day (pupil free day), excursions, Grade 5 camp, reports, three-way conferences and of course, teaching and learning.

ANZAC Day

Anzac Day, 25th April, is one of Australia's most important national occasions. Not only does it mark the anniversary of the first major military action fought by Australian and New Zealand forces during the First World War, but ANZAC day also honors every one of our service men and women who served and died in all wars, conflicts, and peacekeeping operations. We thank them for their service and sacrifice. Due to ANZAC Day falling in the school holidays, on Wednesday the 26th of April, we held a special ANZAC Day commemoration assembly at school. Our school captains did an amazing job leading the assembly. Well done to them.



On ANZAC Day, Elyse Edwards (Grade 6 teacher) and I were privileged and honored to attend the dawn service at the Caroline Springs war memorial along with our school captains, staff, parents, and students. It was a beautiful service and a great reminder of the sacrifices many made and how lucky we are to have the freedom we all have today. Above are a few snapshots of our ANZAC Day celebrations.

PRINCIPAL'S UPDATE

The Victorian Government Schools Agreement 2022 provides teachers with three professional practice days in 2022, two professional practice days in 2023 and one professional practice day in 2024 and beyond. As a result, our professional practice day will be held on Friday 2nd of June. **Students will NOT attend school on this day.**

New build Update

It's all systems go now with lots and lots of working happening around the school. Since my last update we have had the following works that have either been completed or just have started:

Most of the gymnasium slab has been poured. Final part of the slab should be poured by the end of this week.

Steel structural beams to be delivered in the next few weeks.

All the portables and toilet block have been removed.

Specialist Building underway. Rooms have been gutted and ready for plastering soon.

New toilet block near Room 17 has commenced.

New pipes being installed at the front of the school- work still in progress.

A new access path from the back carpark will be created to allow Paul Sadler clients to have a safe exit/entry to Goulay Road.

The path will go from the gravel carpark across the back of the cricket nets to Goulay Rd.

I thank everyone for their understanding and patience during this time. I acknowledge that its difficult, but we are all doing our very best to manage our school with minimal interruption to our students and school community.



PRINCIPAL'S UPDATE



Uniform

School uniform promotes a sense of identity, pride, cohesion and good order in a school. It allows students to feel equal and enhances individual student safety and group security, as well as enhancing the profile and identity of the school and its students within the wider community. The School Council Policy of Parkwood Green PS states that uniform is compulsory for the students of Parkwood Green. It is important that parents are vigilant in ensuring students appearance reflects the expectations of the school community. We would appreciate your assistance in ensuring that a high standard of uniform is maintained.

Kiss and Drop

It is unfortunate that here at the school office, we continue to receive complaints about the way in which some of our parents put their own children, as well as others, at risk during school drop off. We have even been informed of the abusive nature of some parents. **Please be mindful of the example you are setting in front of your children and the risk to public safety.**

The Kiss and Drop zone is a short term stopping area where drivers are allowed to stop and park the vehicle for a short time – no longer than two minutes – while the student exits or enters the vehicle from the kerbside doors. This enables students to walk between the car and the school, using the safety of the footpath.

- In the afternoon, parking and waiting in the Kiss and Drop zone is prohibited.
- The zone operates during peak periods allowing parents to park their vehicles for up to two minutes outside the school gates.
- The zone is a designated No-Parking area where drivers are not able to go in to the school but they may get out of the car to see the child off or welcome the child in, within the two minute timeframe.

PRINCIPAL'S UPDATE

2024 Enrolments Open

I wish to advise everyone, that 2024 Foundation enrolments are open. I urge all families with children reaching school age next year, to enrol now. I am being inundated with requests for enrolment tours and it seems that once again there is much interest from new families wanting to join our school community. We also encourage and welcome enrolments for all year levels too. If you know any local families that would like to join our fabulous school, please give our school a recommendation.

Student Attendance

Research demonstrates a strong correlation between students' learning, longer term life outcomes, attendance at school and appropriate participation in education programs. It is crucial that students develop habits of regular attendance at an early age. Absence from school means that learning opportunities are reduced and this can ultimately lead to poorer student achievement. We encourage all students to attend school regularly and on time to ensure they receive the explicit classroom instruction. It is recommended that family holidays should be taken during school holiday where possible.

Kind regards,

Bobby Kotevski
Principal

ASSISTANT PRINCIPAL'S UPDATE

To Parkwood Green families,

We hope you all had a restful break with your families. I enjoyed some time away with mine up in Bright and Corowa. It has been another settled start to the term with students straight back into routine. Lots of learning is already happening and events such as the Year 1 Zoo excursion, Year 3 Swimming, and the Year 6 Sexual Health Program. It is going to be another jam-packed term, so please keep an eye out on Compass and the termly calendar for upcoming events.

Look forward to seeing you all throughout the term.

Monique Lumsden
(Acting Assistant Principal)

National Simultaneous Storytime



Australian Library and
Information Association

 SCHOLASTIC

LIANZA

NATIONAL SIMULTANEOUS
STORYTIME

the
SPEEDY

SLOTH

REBECCA YOUNG
HEATH MCKENZIE

\$15

PRE-ORDER

AT THE FRONT OFFICE

#NSS2023

24 May 2023
www.alia.org.au/nss

Social & Emotional Learning (SEL) at PGPS

At PGPS we aim for all our students to develop self-awareness, self-control, and interpersonal skills that are important for school, work and life outcomes. Social-emotional competence helps students cope with everyday challenges and improves learning and wellbeing. In our classrooms through our weekly SEL hour at PGPS, staff work closely with our students to develop the understanding and skills to:

Nurture a positive sense of self, promote respectful relationships and build capacity to manage emotions, behaviours and interactions with others.

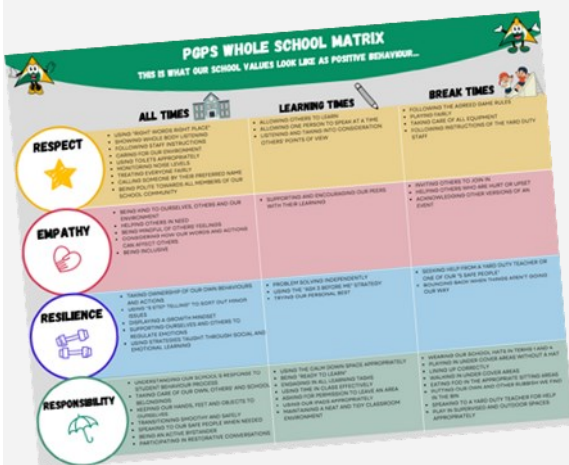
Weekly SEL sessions also engage students in the **Respectful Relationships** curriculum and **School Wide Positive**

Behaviours.

Respectful Relationships (RR)

Respectful Relationships (RR) is an initiative to support schools to promote and model respect and equality. Apart of the initiative is teaching our students how to build healthy relationships, resilience and confidence. Weekly RR lessons, embedded through our SEL hour, are taught to students from F-6 to develop students' social, emotional and positive relationship skills.

The Resilience, Rights and Respectful Relationships (RRRR) learning materials cover eight topics of Social and Emotional Learning across all levels of primary and secondary education: **Emotional Literacy; Personal Strengths; Positive Coping; Problem Solving; Stress Management; Help Seeking; Gender and Identity; and Positive Gender Relationships.** The topics being



covered this term across F-6 are **Personal Strengths (Topic 2), Positive Coping (Topic 3) and Problem Solving (Topic 4).**

School Wide Positive Behaviours (SWPBS)

Through SWPBS, our staff and students establish a common philosophy and purpose: We use a common language to discuss behaviour. Our school philosophy at Parkwood Green emphasises the need to teach appropriate behaviour much like academic learning. During this learning, our students explore our **whole school matrix** and the **expected behaviours** through each of our

values: **Respect, Empathy, Resilience and Responsibility.**

SEL in the Classroom – TERM 2

Foundation

Exploring the value of Empathy and how students can display this in the classroom with their peers and teachers

Year 1

Exploring the Respectful Relationships Topics as well as students being able to independently demonstrate the 4 school values.

Year 2

Practising gratitude by filling in a gratitude journal and being able to identify their personal strengths and the strength of others through Respectful Relationships. Year 2 students have also set a class and individual goal linking to the school values on our matrix, some chosen goals include: focusing on one person speaking at a time, being inclusive and practising resilience by persisting when something gets hard and displaying a growth mindset.

Year 3

Focusing on developing students' personal strengths and applying these to real life situations inside and outside of the classroom. Also working on classroom transitions and maintaining high expectations in line with our school matrix.

Year 4

Students are working towards identifying their personal strengths before moving onto positive coping strategies, aligning with the school value of Resilience.

Year 5

Focusing on the school matrix, in particular the values of Respect and Responsibility.

Students are also working through Topics 2, 3 and 4 of Respectful Relationships.

Year 6

Building their classroom community through revisiting what high expectations look like in line with our whole school matrix. Recapping key learnings from the Respectful Relationships topics and how these align with our school values.

State Schools Relief 2023 Prep CSEF Uniform Package

CSEF was established to provide payments for eligible students to attend camps, sports days and excursions. To find out more, or to apply for assistance, please refer to the Department of Education and Training website.

SSR provides a uniform package each year to all Prep families/carers eligible for CSEF funding.

2023 Prep Uniform Package for CSEF recipients Prep students for 2023 that are recipients of the Camps, Sports and Excursion Fund (CSEF) automatically qualify for the uniform package and/or voucher. What's in the package?

The 2023 package contains the following items:

1 x Rugby Top or Hooded / Windcheater or Jacket (Bomber/Polar Fleece) or Long Sleeve Polo

1 x Track Pants or Trousers or Pants

1 x Pair of Shoes (Lace Ups or T-Bars or Sneakers Skate or Sneakers Velcro)

Please note the following:

- a) PE items are not included as part of this package
- b) Shoes must be requested in UK sizes

Please contact the Office if you are eligible and would like to order the Prep Uniform package.

AUSTRALIA'S BIGGEST MORNING TEA

Dear Parkwood Green Community,

This year, we're hosting an Australia's Biggest Morning Tea to help Cancer Council raise vital funds for people impacted by cancer.

We've set a fundraising goal of \$1,000 and we could really use your help!

Your donation or contribution to this event, however big or small, will make a real difference! It'll help fund world-class cancer research, which has already increased cancer survival rates from 49% in the 1980s to 69% today.

It'll fund prevention initiatives like the HPV vaccine and the new cervical screening program, which have put Australia on track to become the first country to eliminate cervical cancer as a public health problem. How incredible is that?

Plus, your donation will also importantly help fund support services for the 150,000 Australians who are diagnosed with cancer every year. With support services in higher demand than ever, your help now is particularly vital.

So will you help us reach our goal? We've set up a fundraising page so it's easy to donate online:

<https://www.biggestmorningtea.com.au/fund.../parkwoodgreenps>

Together we can help Australia take big steps towards a cancer free future, so thank you again!

Keep an eye out on our school's Facebook Page and the Compass Parent Portal for further Information.



Administration Reminders

Please check lost property for lost uniforms, drink bottles etc.

If there are any changes to address, phone numbers or emergency contacts please update with the Office, we have had many instances where we have tried to contact parents only to find that numbers are disconnected.

Mothers Day Stall —forms are due by Tuesday 09th May

We have access to the Office again via the front of the school. There is temporary fencing around the area so please be careful.



SPECIALIST NEWS